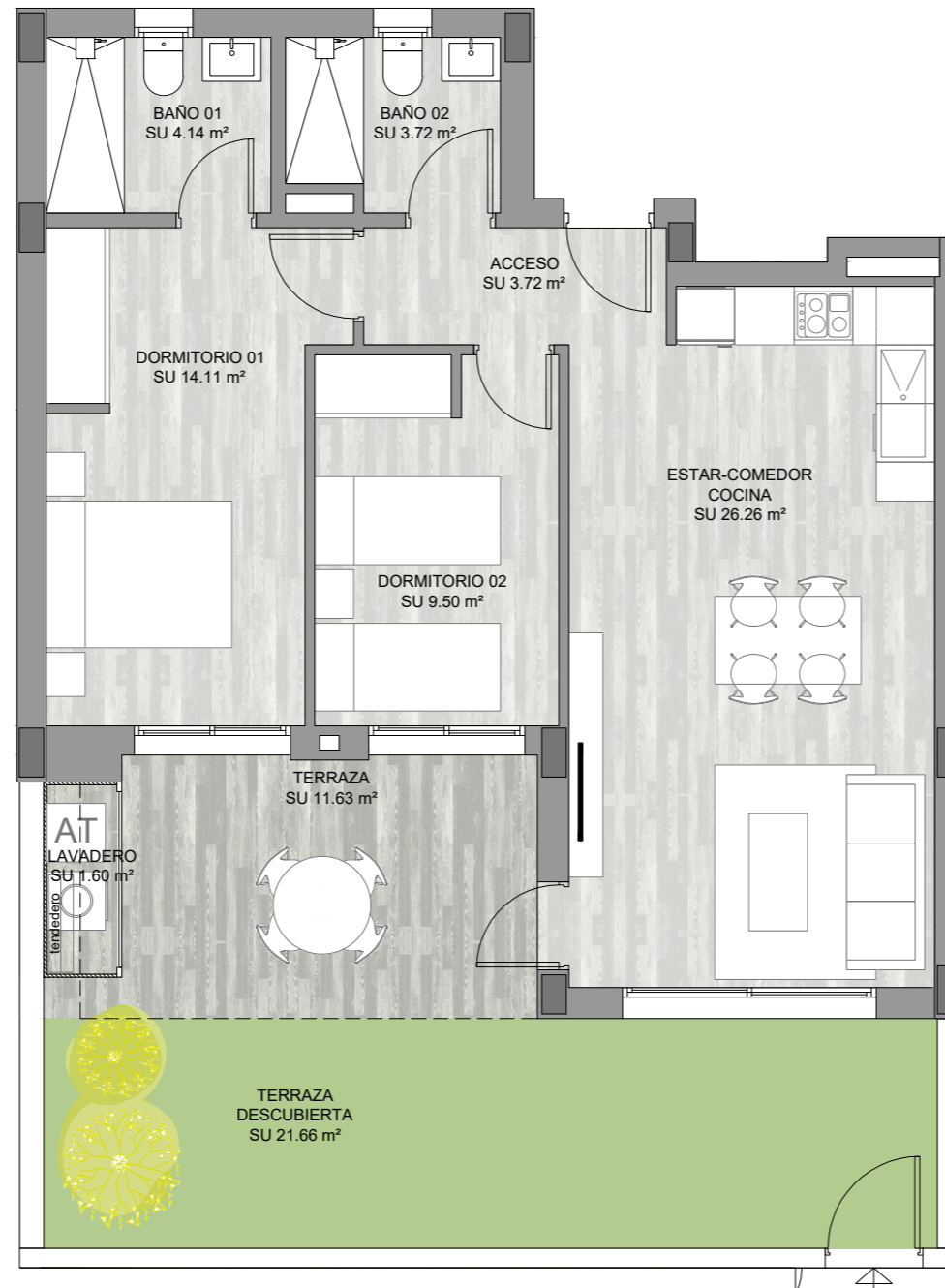


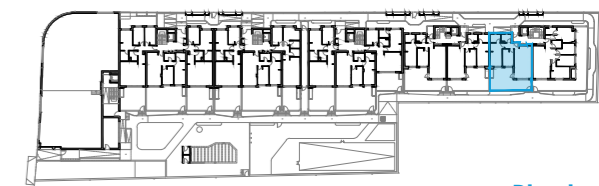
VIVIENDA B

Escalera 6 Planta Baja

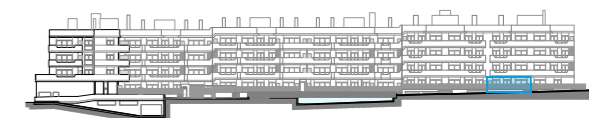


Total superficie útil interior	s.u. 61.45 m ²
Terraza cubierta	s.u. 11.63 m ²
Lavadero-Tendedero	s.u. 1.60 m ²
Terraza descubierta	s.u. 21.66 m ²
Total superficie útil	96.34 m²

Total const. int.	70.09 m ²
Sup. terraza/Lavadero cub.(100%)	13.00 m ²
Sup. terraza desc. (100%)	24.45 m ²
Total construida	107.54 m²



Planta



Alzado

