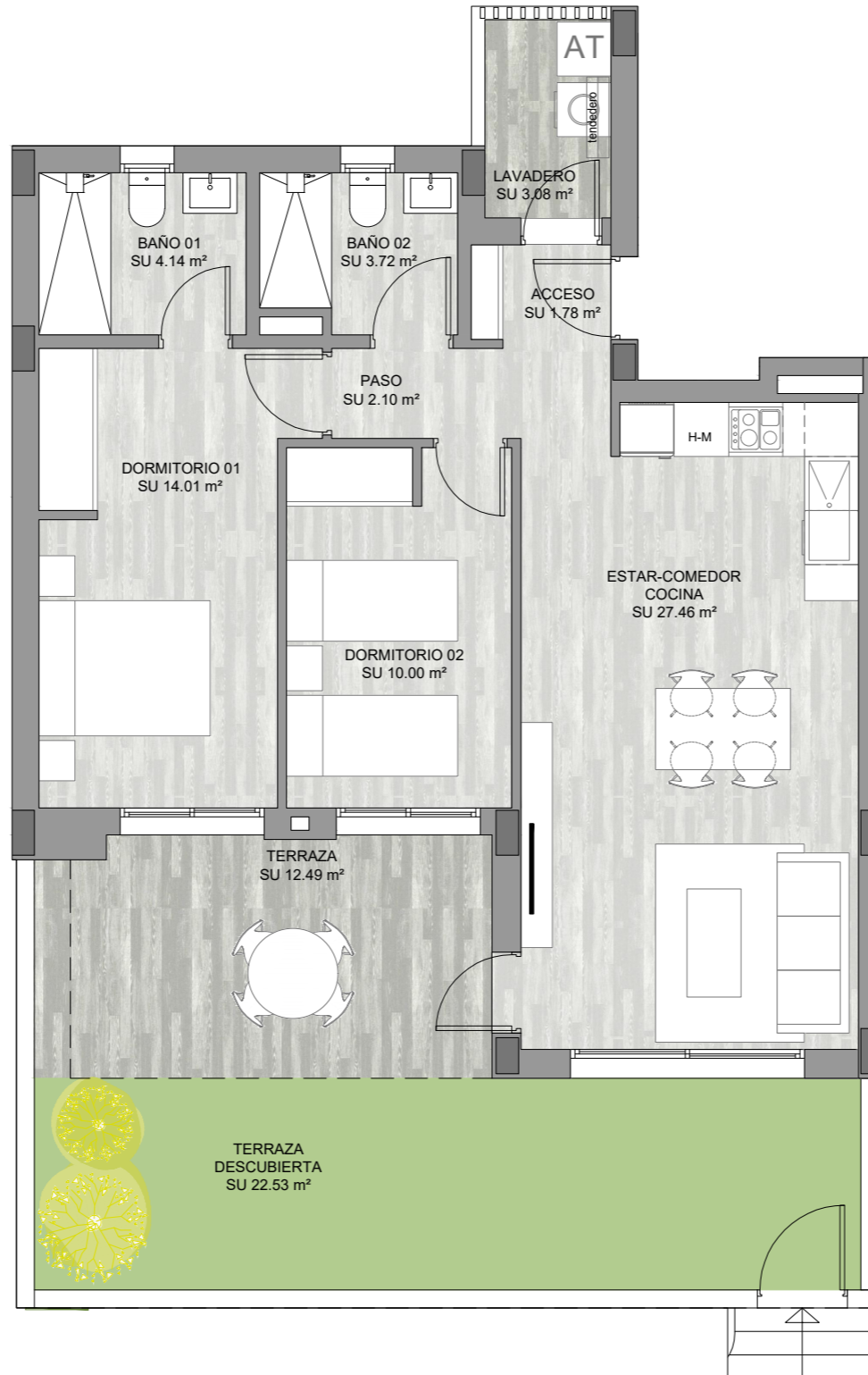


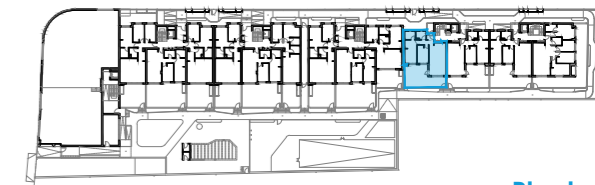
VIVIENDA B

Escalera 5 Planta Baja

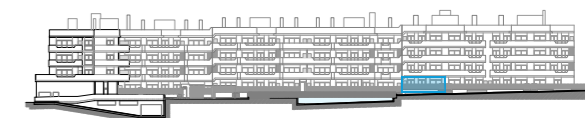


Total superficie útil interior	s.u. 63.21 m ²
Terraza cubierta	s.u. 12.49 m ²
Lavadero-Tendedero	s.u. 3.08 m ²
Terraza descubierta	s.u. 22.53 m ²
Total superficie útil	101.31 m²

Total const. int.	72.27 m ²
Sup. terraza/Lavadero cub.(100%)	15.60 m ²
Sup. terraza desc. (100%)	25.85 m ²
Total construida	113.72 m²



Planta



Alzado

