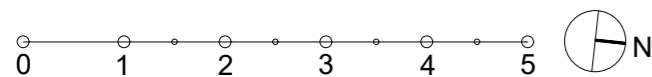
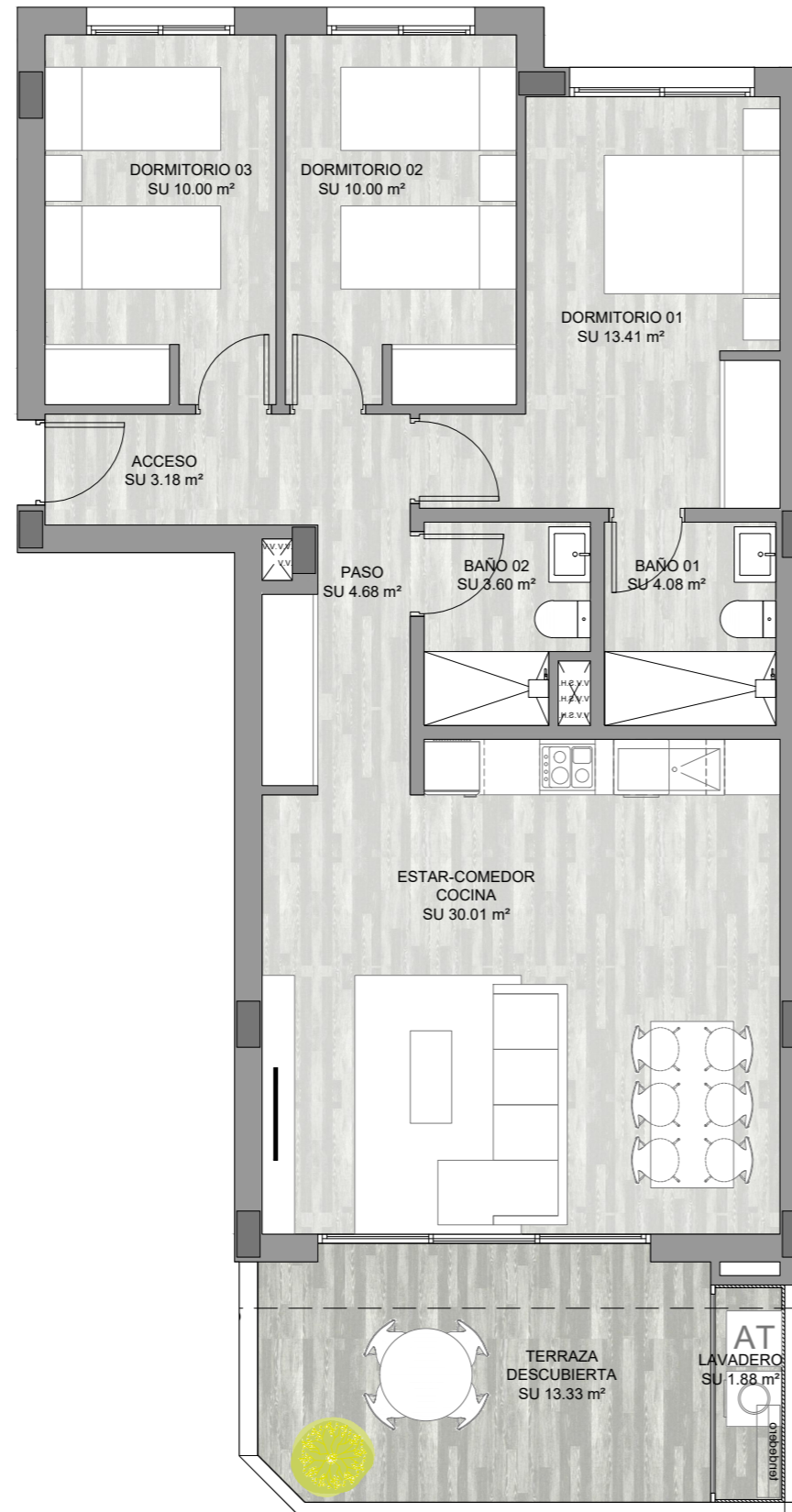


VIVIENDA G

Escalera 3 Planta 3ª



Total superficie útil interior	s.u. 78.96 m ²
Terraza cubierta	s.u. 0.00 m ²
Lavadero-Tendedero	s.u. 1.88 m ²
Terraza descubierta 1	s.u. 13.33 m ²
Terraza descubierta 2	s.u. 0.00 m ²

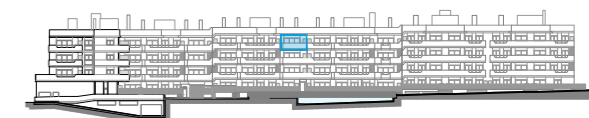
Total superficie útil 94.17 m²

Total const. int.	88.70 m ²
Sup. terraza cub.(100%)	0.00 m ²
Sup. terraza desc. (100%)	15.50 m ²

Total construida 104.20 m²



Planta



Alzado