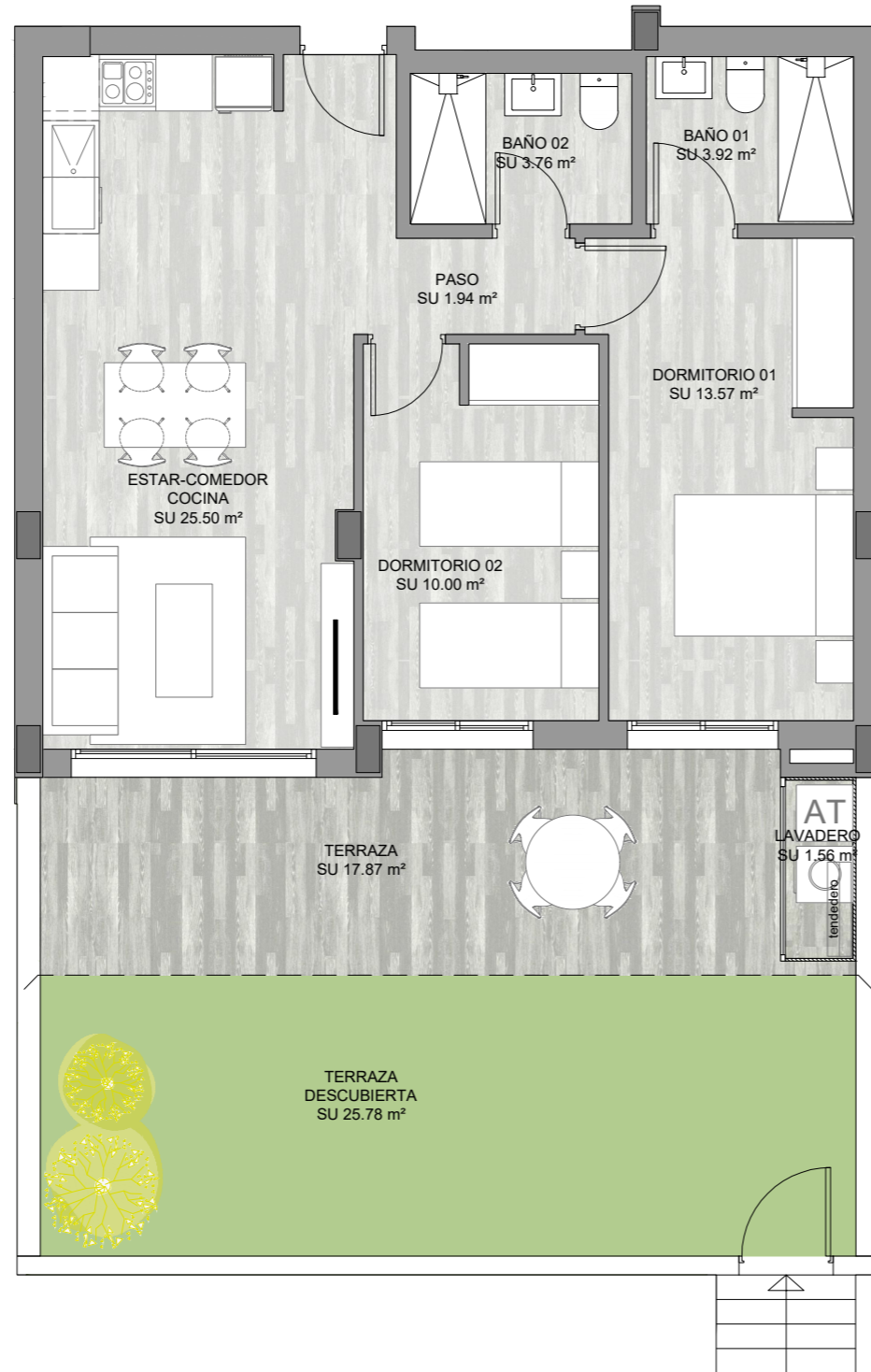


VIVIENDA B

Escalera 3 Planta Baja

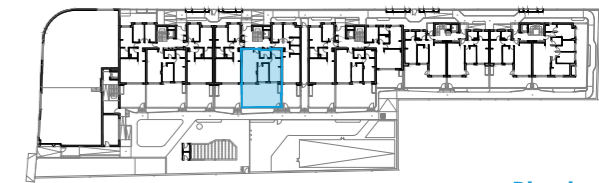


Total superficie útil interior	s.u. 58.69 m ²
Terraza cubierta	s.u. 17.87 m ²
Lavadero-Tendedero	s.u. 1.56 m ²
Terraza descubierta 1	s.u. 25.78 m ²
Terraza descubierta 2	s.u. 0.00 m ²

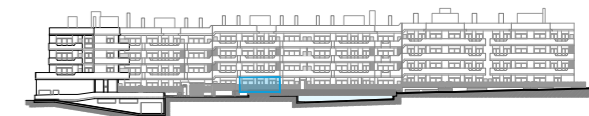
Total superficie útil 103.90 m²

Total const. int.	65.43 m ²
Sup. terraza cub.(100%)	19.46 m ²
Sup. terraza desc. (100%)	28.30 m ²

Total construida 113.19 m²



Planta



Alzado

