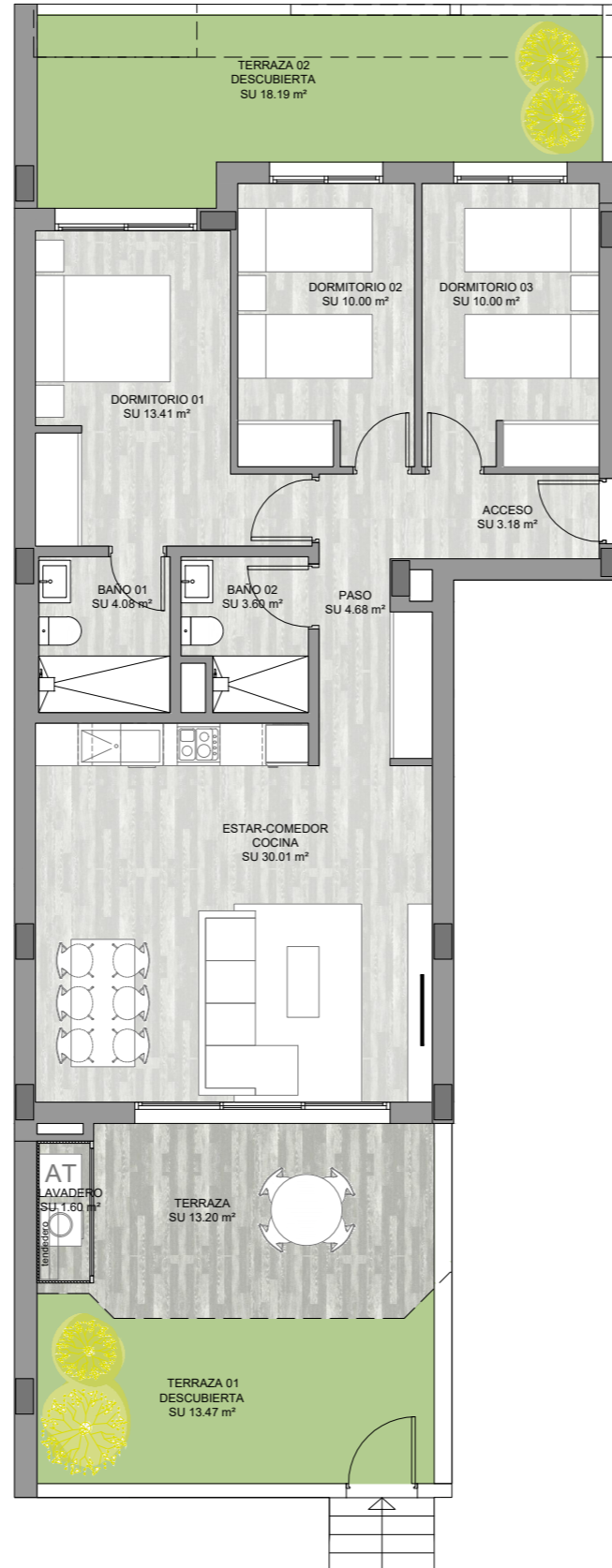


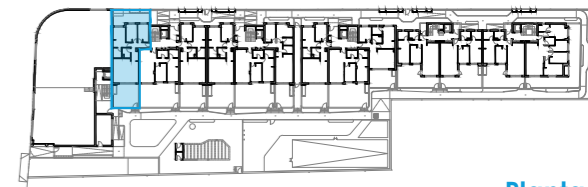
VIVIENDA C

Escalera 2 Planta Baja

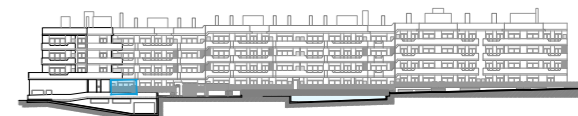


Total superficie útil interior	s.u. 78.96 m ²
Terraza cubierta	s.u. 13.20 m ²
Lavadero-Tendedero	s.u. 1.60 m ²
Terraza descubierta 1	s.u. 13.47 m ²
Terraza descubierta 2	s.u. 18.19 m ²
Total superficie útil	125.42 m²

Total const. int.	88.70 m ²
Sup. terraza cub.(100%)	15.12 m ²
Sup. terraza desc. (100%)	34.20 m ²
Total construida	138.02 m²



Planta



Alzado

