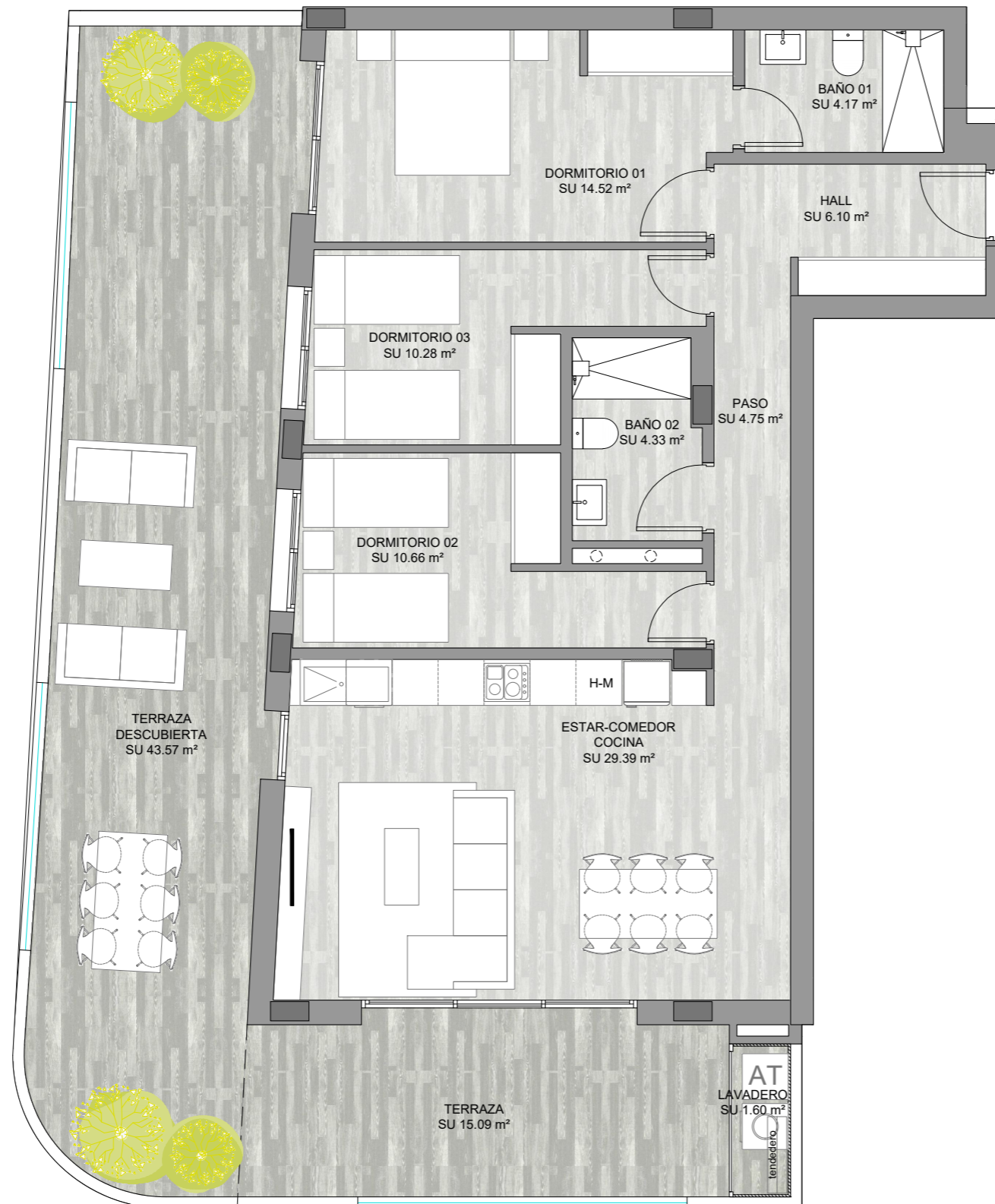


VIVIENDA B

Escalera 1 Planta 1ª

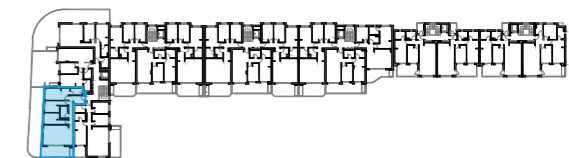


Total superficie útil interior	s.u. 84.20 m ²
Terraza cubierta	s.u. 15.09 m ²
Lavadero-Tendedero	s.u. 1.60 m ²
Terraza descubierta	s.u. 43.57 m ²

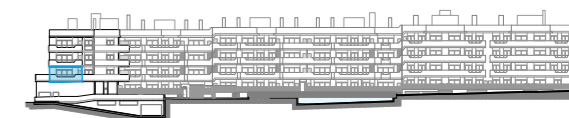
Total superficie útil 144.46 m²

Total const. int.	96.55 m ²
Sup. terraza cub.(100%)	16.86 m ²
Sup. terraza desc. (100%)	45.85 m ²

Total construida 159.26 m²



Planta



Alzado

