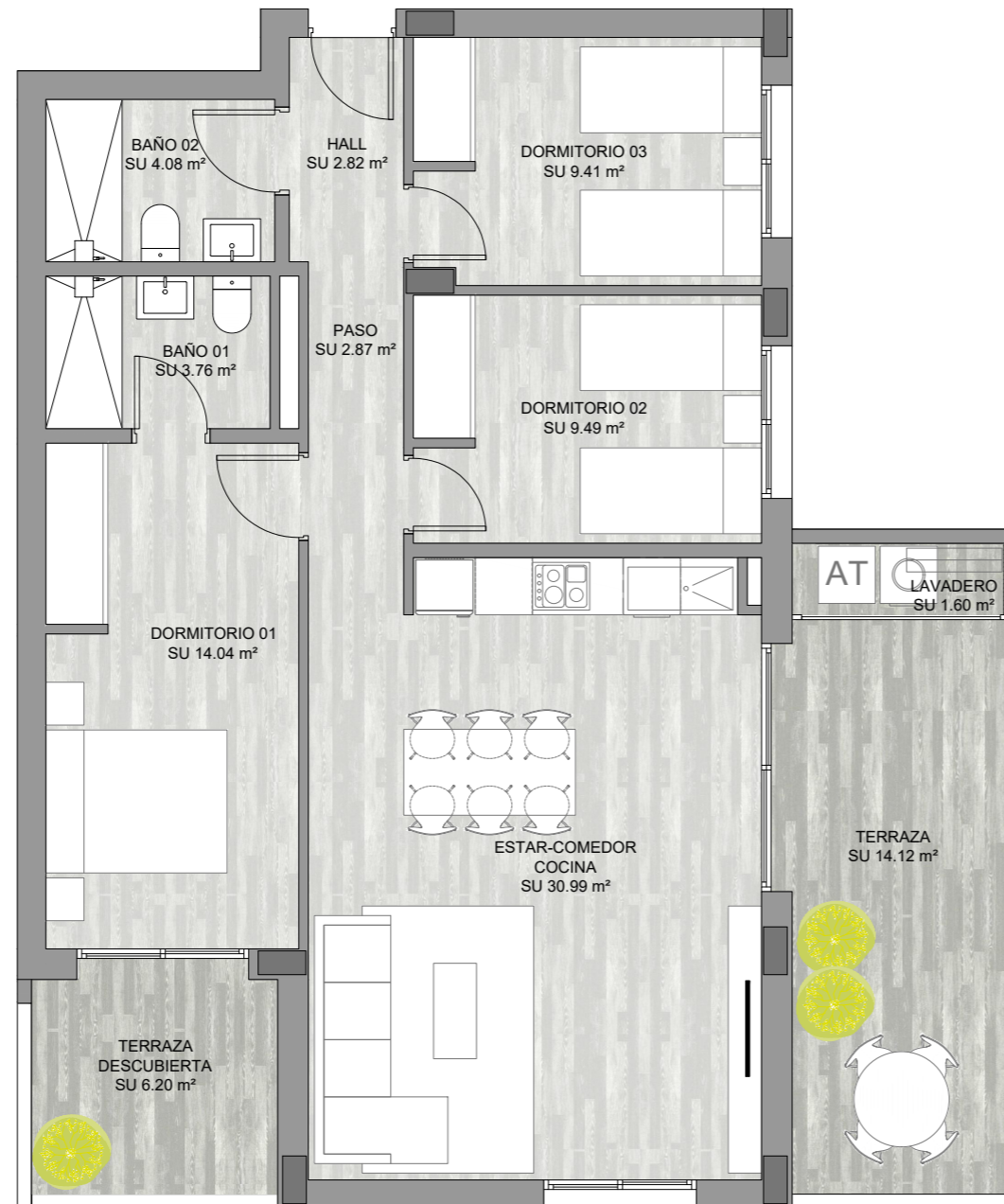


VIVIENDA A

Escalera 1 Planta 1ª

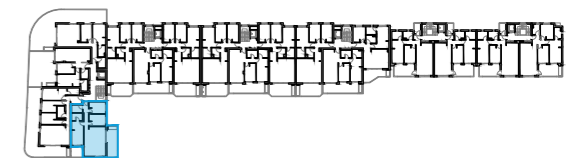


Total superficie útil interior	s.u. 77.61 m ²
Terraza cubierta	s.u. 14.12 m ²
Lavadero-Tendedero	s.u. 1.60 m ²
Terraza descubierta	s.u. 6.20 m ²

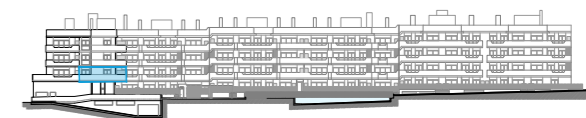
Total superficie útil 99.53 m²

Total const. int.	88.02 m ²
Sup. terraza cub.(100%)	16.46 m ²
Sup. terraza desc. (100%)	6.20 m ²

Total construida 110.68 m²



Planta



Alzado

